

## Model Identification For Triumph Tiger 1200 GT, GT PRO and Rally PRO (2022 Onwards)

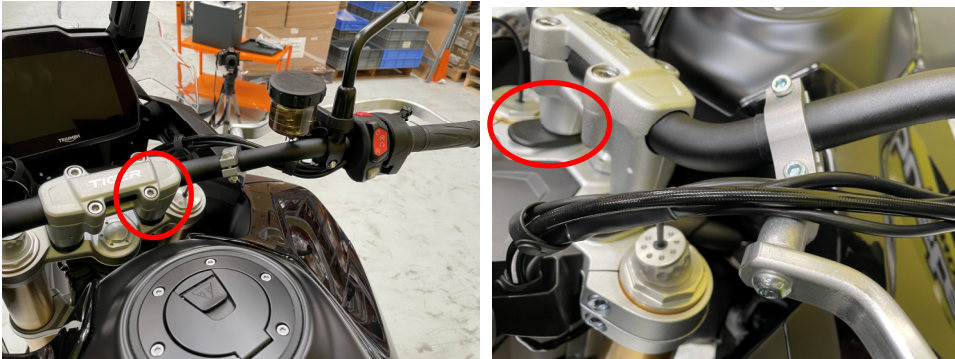
We are receiving numerous reports of fitting problems with the Tiger 1200 GT, GT PRO and Rally PRO from (2022 onwards), and have found motorcycles, regardless of year model, may have different handlebars and handlebar positions in the upper triple clamps which is effecting fitment.

Below is some information on how to identify which hardware kit is required for each variant.

Handlebar positioned to the rear of the upper triple clamp.

The handlebar mounting bolts are positioned in a square shape.

**Correct fitment is BHG-101-01-NP**



Handlebar positioned to the front of the upper triple clamp.

The handlebar mounting bolts are positioned in a trapezoidal shape.

**Correct fitment is BHG-102-00-NP**

